



**National Federated
Compute Services**
NetworkPlus

Spring Conference
26 – 27 February 2026

Federation of Compute and Infrastructures in the Arts and Humanities

Prof Karina Rodriguez Echavarria, Dr Myrsini Samaroudi

University of Brighton

Dr Arianna Ciula, Neil Jakeman, Matt Penn

Kings Digital Lab/Kings College London



Our aim is to engage with the A&H communities to collectively elicit requirements around federation within the current DRI A&H landscape to support the NFCS roadmap development





Project team



Dr Arianna Ciula
King's College London
KDL



Matt Penn
King's College London
eResearch



Prof. Karina Rodriguez Echavarria
University of Brighton



Neil Jakeman
King's College London
KDL



Dr Myrsini Samaroudi
University of Brighton



Existing A&H DRI landscape

SKILLS

Training frameworks



e.g. DISKAH, institution, DRI consortium

Researchers, practitioners, DRTPs



COMMUNITIES

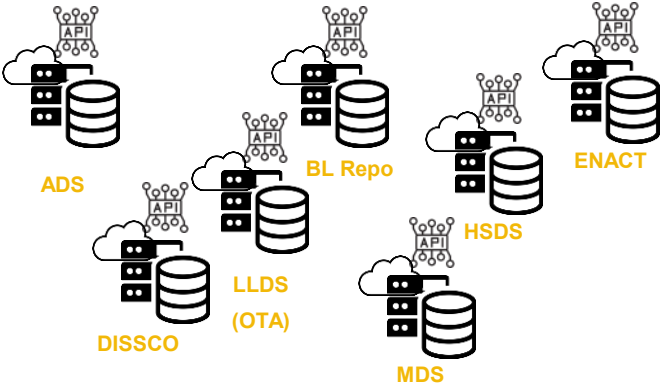
Collaboration and support networks



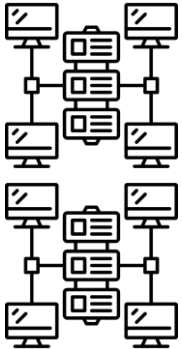
e.g. Data Cultures (UK), CCP (UK), RSE Summer schools (UK), UK-Ireland DH, DARIAH, CLARIN (European)



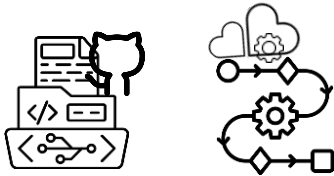
Other data stores and services (e.g. institutional, national/international)



IDAH-funded Data Services



Tier 1, 2 and 3 national compute, and EuroHPC



Code and workflow hosting



Libraries, models and other code

DATA

SYSTEMS & SOFTWARE

Core objectives

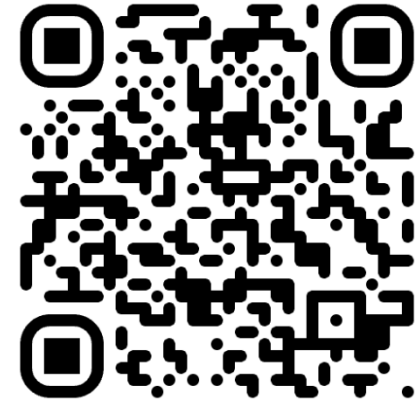
1. Elicit and validate **federation requirements** in A&H communities by:
 - Designing access user journeys;
 - Improving connectivity amongst DRI Components within A&H infrastructures;
 - Testing approaches for digital skills.
2. Collect **feedback on the national strategic roadmap**



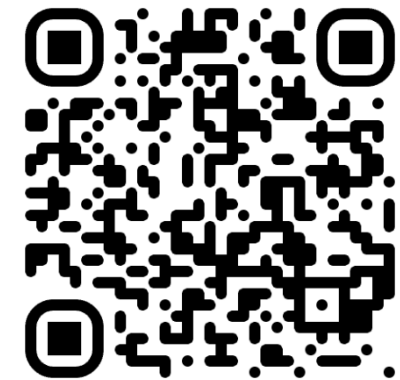
Methodology

- **Desk-based research** – sample of selected literature (Sep 25 – Jan 26).
- **Interviews** with components of A&H DRI (Jan 26 – Mar 26).
- **Testing** approaches for training and **user-access journeys** (Apr 26 – Jun 26)
- **Collating feedback** (Jun 26 – Jul 26).

Rodriguez Echavarria, K., Samaroudi, M., Jakeman, N., Ciula, A., & Matt, P. (2026). Federated Digital Research Infrastructures (DRI) for the Arts and Humanities Communities (0.2). Zenodo. <https://doi.org/10.5281/zenodo.18350953>



Report with initial findings



Project website

Research User Roles/ Journeys

01 Research Frammer 

02 Source Explorer /
Corpus Builder 

03 Data Generator 

04 Data Shaper 

05 AI/Compute
Developer 

06 Computational
Critical Interpreter 

07 Scholarly
Communicator 



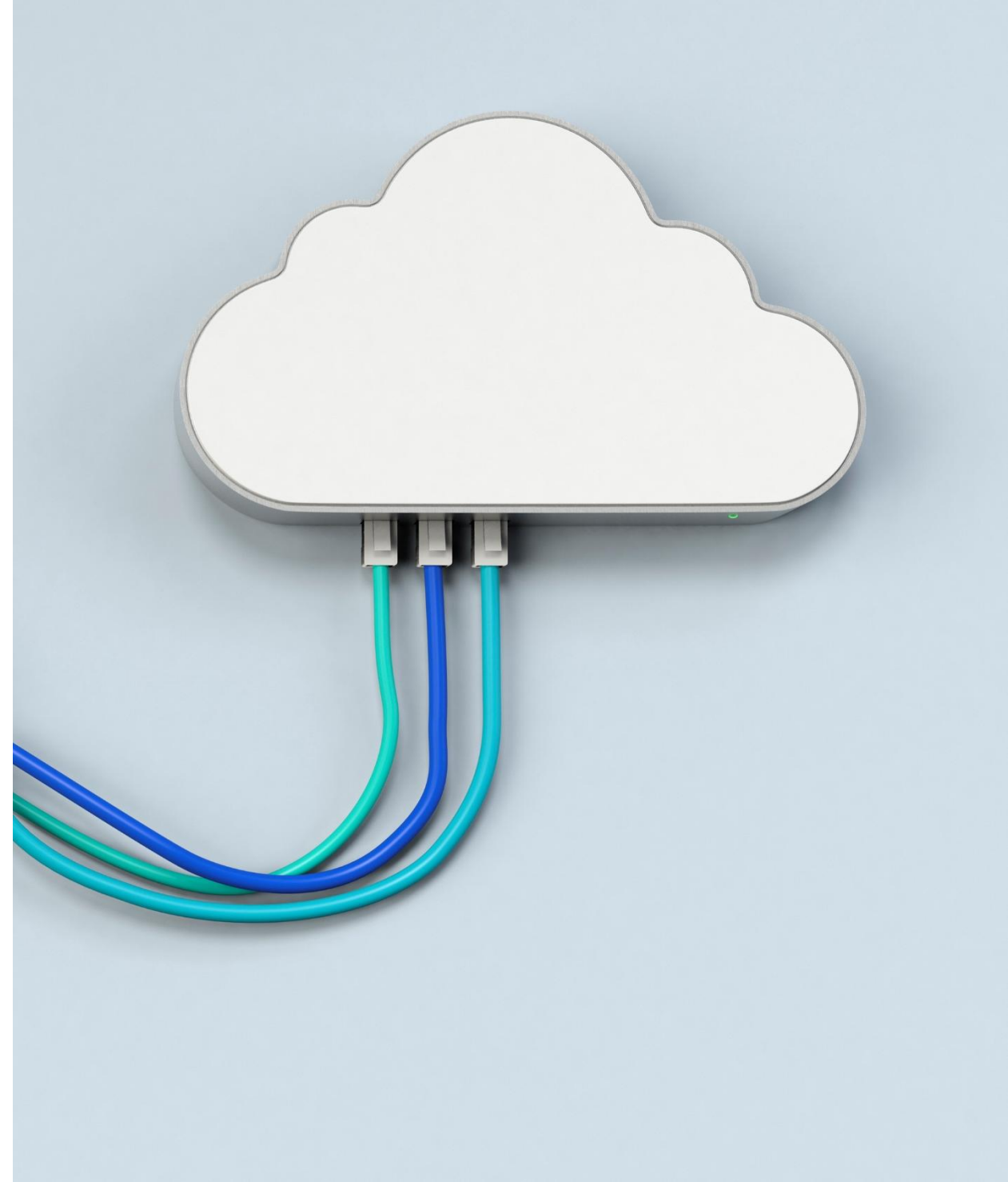
Guided Access

- **Clear user journeys and demonstrator projects.**
- **Brokerage service** guiding users to data repositories, compute, and methods.
- **Assistive tools**, e.g. LLMs.
- Support for different levels of **expertise and access.**



Workflows and Compute

- Support needed workflows with high **computation** and **data** demands¹.
- Access to web-based scientific workflow platforms, cloud-based services and HPC.
- **Visual and intuitive interfaces.**
- **Licensing, copyright, and granular access controls** must be embedded in workflows.



Communities

- **Inclusive, cross-disciplinary, cross-institutional and international.**
- **Community-building** activities.
- Sustained support for **Digital Research Technical Professionals.**
- **Shared authentication, contributor taxonomies** (e.g., CRediT), and flexible permissions.



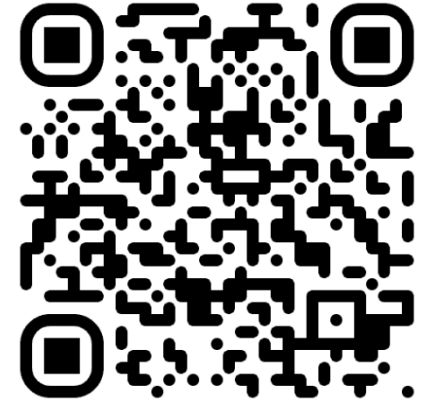
Sustainability and Governance

- Inc. environmental, labour, and collaborative dimensions.
- **Open science** practices.
- **Career development** and **evaluation frameworks**.
- Support **researcher mobility**.
- Funding models must **address inequities** and support post-project maintenance.

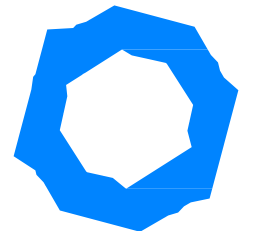


Next steps

- Collating results of interview with data services to enrich requirements.
- Testing approaches for training and user-access journeys.
- Collating feedback on the national strategic roadmap.



Report with initial findings



Thank you

